

*DeArmond*TM

ONE BOSS

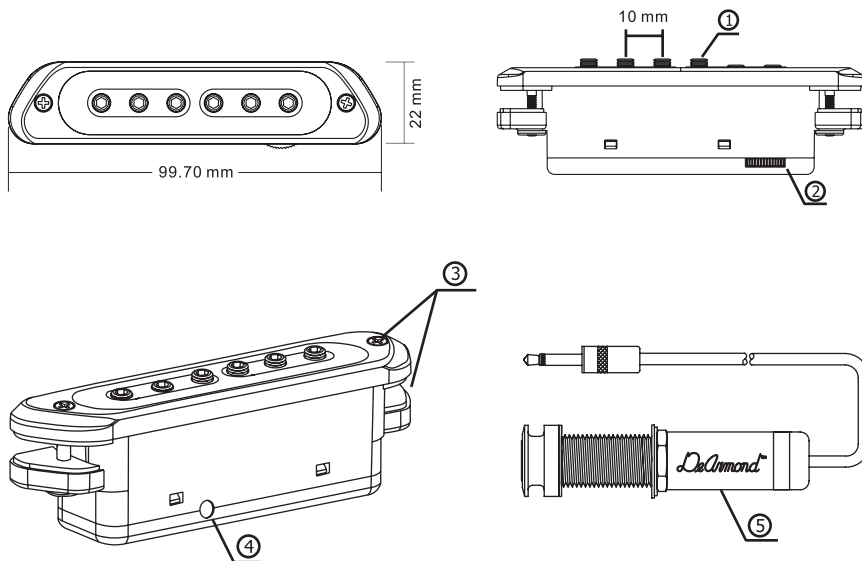
Acoustic Soundhole Pickup

DeArmond™

TONE BOSS

Getting to Know the Tone Boss:

1. Adjustable Pole Piece – adjustable for volume balance from string to string. To increase the volume on a string that is quieter than the others, unscrew the pole piece with the included 2.5mm allen key. To decrease the volume of a string that is louder than the others, screw in the pole piece.
2. Volume Control – adjusts overall output from the Tone Boss to your amplifier.
3. Cork Soundhole Clamp – safely attaches the Tone Boss to the guitar's soundboard.
4. Output Jack (2.5mm)
5. ¼" Mono Output Jack – includes convenient strap button.



DeArmond™

DeArmond™

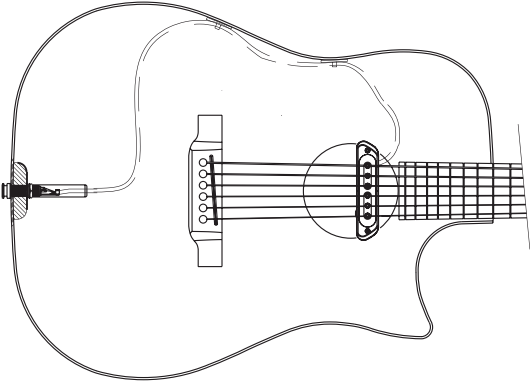
TONE BOSS

Caution:

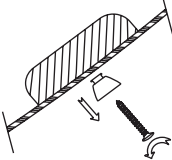
1. To avoid electric shock and/or malfunction:
 - Do not disassemble for repair.
 - Do not expose to excessive vibration or shock.
 - Do not expose to moisture or operate with wet hands.
 - Do not place in high temperature and/or humidity such as direct sunlight, near a heater, in a bathroom, etc.
 - Do not place in dusty or dirty space.
2. Cleaning:
 - Do not use thinner or alcohol for cleaning.
 - Use a dry and clean cloth for best results.
3. Installation:
 - Designed for use in steel string guitars only.
 - See reverse for endpin installation tips.

DeArmond™

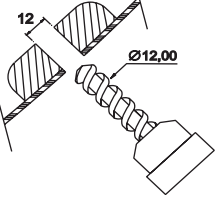
End Pin Installation:



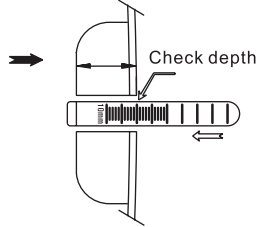
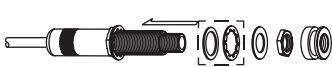
1 Remove the Strap pin



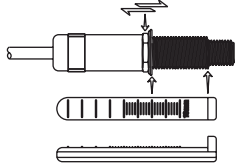
2 Drill a 12mm hole



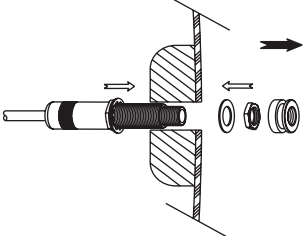
3 Reassemble the washer



4 Adjust the position of the nut according to the depth



5 End pin installation



6 Complete the cover installation

